



FOREST SECTOR COMPETENCE CENTRE OF LATVIA

Uldis SPULLE
Leader

NACIONĀLAIS
ATTĪSTĪBAS
PLĀNS 2020



EIROPAS SAVIENĪBA
Eiropas Reģionālās
attīstības fonds

IEGULDĪJUMS TAVĀ NĀKOTNĒ

Project Nr. 1.2.1.1/18/A/004

MISSION and RESEARCH DIRECTIONS

- ▶ FSCCL realizes industrial research projects, new products and technologies, promoting forestry - and related industries development.

Development of 2 scientific directions:

- Increasing the capital value of forests and forestry.
- New wood materials and technologies.



PROJECTS Increasing the capital value of forests and forestry

- ▶ Group survey automation options
- ▶ Investigation of bark equations included in automated surveying devices and harvester software
- ▶ Development of a biological preparation to reduce the damage caused by root rot in coniferous stands
- ▶ Technology for the efficient transfer of genetic benefit in plant production and forestry
- ▶ Development of modeling tools and recommendations for reducing greenhouse gas (GHG) emissions in forest stands on fertile organic soils
- ▶ Approbation of alternative logging solutions for development of non-standard felling areas and soil preparation
- ▶ Evaluation of species detection possibilities using Sentinel satellite data (in Latvian conditions)

PROJECTS **New wood materials and technologies**

- ▶ Development of a support system for the development of fire protection and structural connection solutions for wood construction products
- ▶ Wood defect repair technology
- ▶ Production of high purity betulin from birch by-products
- ▶ New plywood binders and composites
- ▶ Modification of impregnation mixture recipe for laminated plywood with different surface textures
- ▶ In-depth research of linseed oil paint application system conditions and introduction of experimental equipment system in SIA “EKJU”
- ▶ Protective decorative thermomechanical treatment of wood cladding materials
- ▶ Glued window blanks from fast-growing tree species
- ▶ Recycling of glued wood construction residues into useful large-sized wooden construction materials

COOPERATION PARTNERS



SIA "Meža un koksnes produktu
pētniecības un attīstības institūts"

AS "Latvijas Finieris"

SIA "EKJU"

SIA "VMF LATVIA"

LVMI "SILAVA"

SIA "Pavasars Wood Constructions"

SIA "Kokpārstrāde 98"

SIA "Sandis un partneri"

SIA "Topo dati"

SIA "Qbit"

SIA "Funduss"

One good example and You can use it also...

- Company Tilde developed computer translator <https://mezi-mt.tilde.lv/#/text>



Esi sveicināts Meža nozares mašintulkā!

Izmanto šo rīku, lai automātiski tulkotu ar meža nozari saistītus tekstus, dokumentus un mājas lapas. Ierakstot tulkošanai vienu vārdu, sinonīmu vārdnīca palīdzēs Tev atrast tā sinonīmus.

Kā Mašintulks var tev palīdzēt?

Es jau visu zinu

[Tulkot tekstu](#) [Tulkot dokumentu](#) [Tulkot tīmekļa lapu](#)

[Par rīku](#) [Atsauksmes](#)

No: Angļu ▾



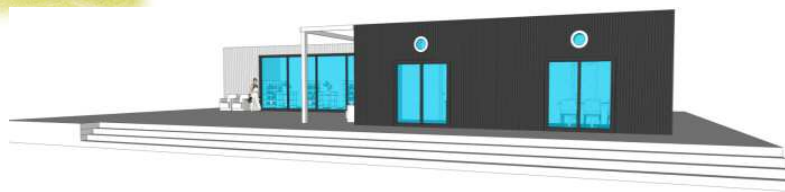
Uz: Latviešu ▾

Tulkot

Ievadiet tulkojamo tekstu

Mašintulkošanas rezultāti ļauj saprast teksta nozīmi, bet nevar aizstāt cilvēka radītu tulkojumu.

Thanks for listening!
Questions?
We are opened for cooperation!



CONTACTS

Address: Dzerbenes street 27, Riga, LV-1006, Latvia

Phone: +371 29548959

E-mail: birojs@mnkc.lv

WEB: mnkc.lv

